



Oak



Holly



Horse Chestnut



Giant Redwood

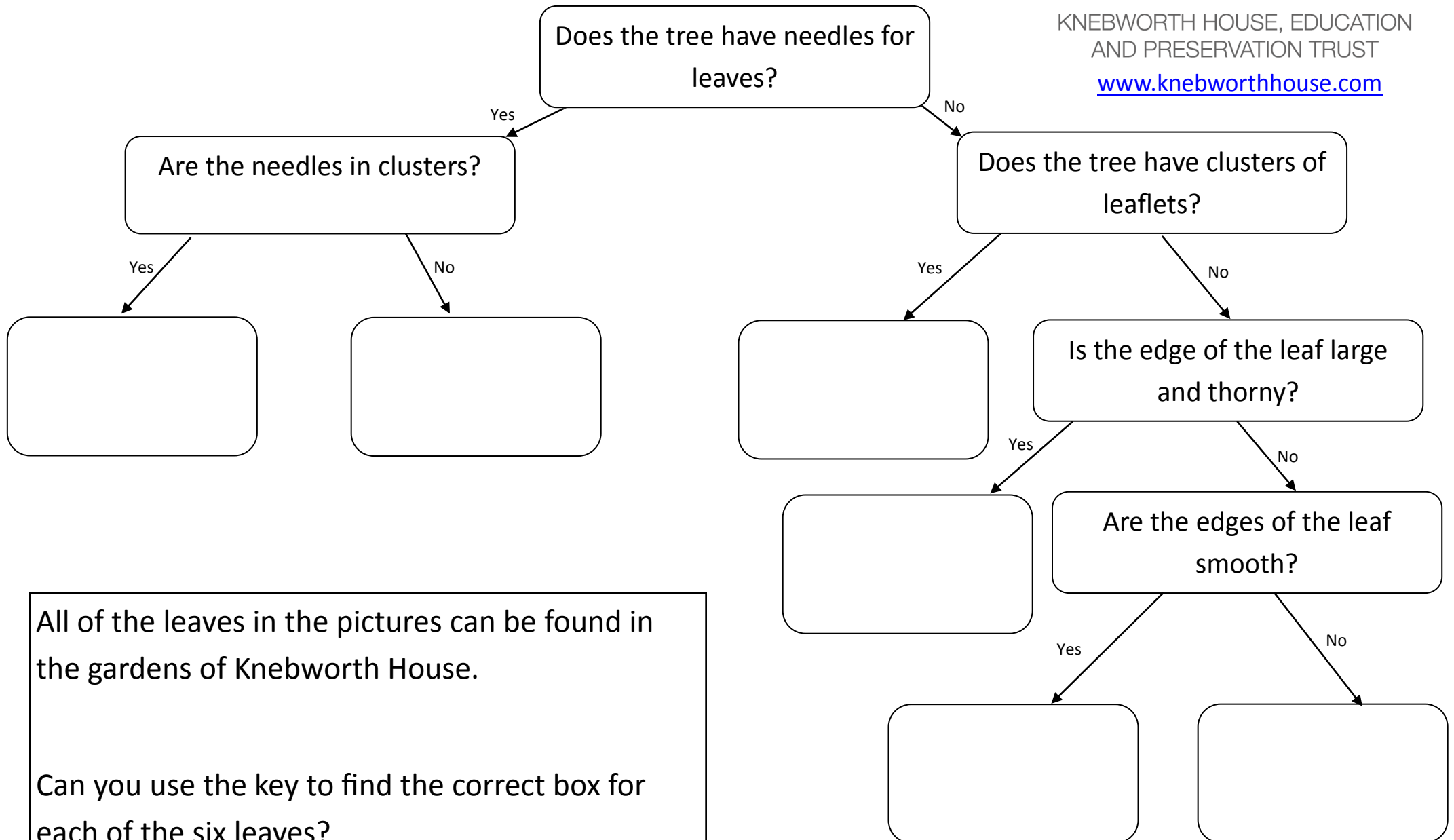


Mulberry



Photo by David J. Stang [CC BY-SA 4.0 (<https://creativecommons.org/licenses/by-sa/4.0/>)], via Wikimedia Commons

Austrian Pine



All of the leaves in the pictures can be found in the gardens of Knebworth House.

Can you use the key to find the correct box for each of the six leaves?